



Parliament View, Albert Embankment, SE1 7XQ  
Asking Price £550,000

coopers  
OF LONDON EST. 1986

# Parliament View, Albert Embankment, SE1

- Modern purpose built development
- One bedroom apartment
- Separate kitchen
- Concierge Gym
- Parking space included

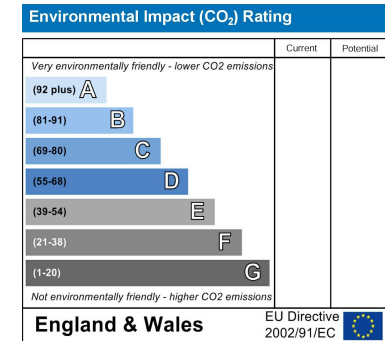
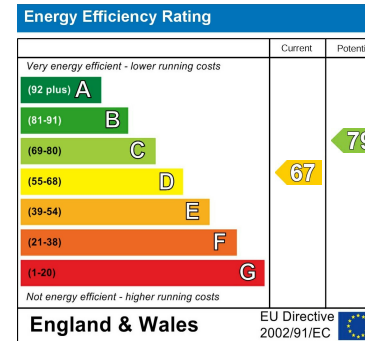
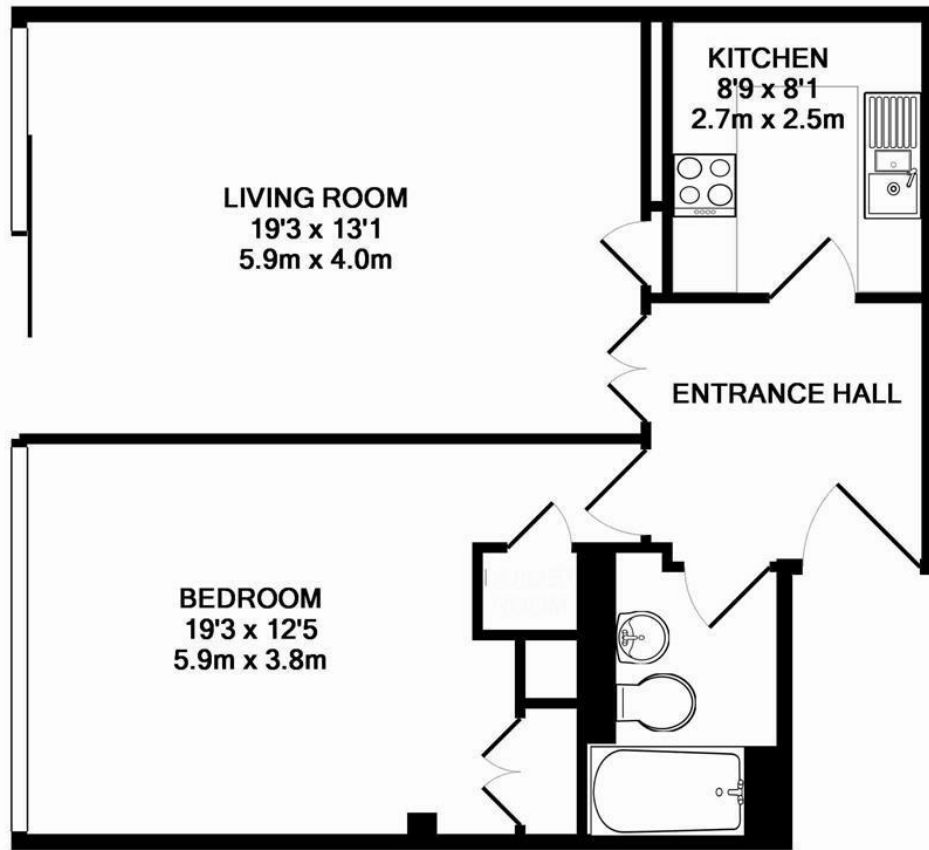
Coopers of London are delighted to offer this spacious one bedroom apartment set in a modern purpose built development located by Lambeth Bridge. A stone's throw away from the River Thames.

Features include a large living room with wood flooring, full height windows, a separate kitchen and a bedroom with an integrated wardrobe.

Residents of Parliament View have the benefit of a concierge, communal gardens and a gym. Parking space included







### Viewing

Strictly by appointment with:  
 Coopers of London , 22 Cleveland Street,  
 Fitzrovia, London W1T 4JB  
[info@coopersoflondon.co.uk](mailto:info@coopersoflondon.co.uk)

**0207 580 9658**

These particulars, whilst believed to be accurate are set out as a general outline only for guidance and do not constitute any part of an offer or contract. Intending purchasers should not rely on them as statements or representation of fact, but must satisfy themselves by inspection or otherwise as to their accuracy. No person in this firms employment has the authority to make or give any representation or warranty in respect of the property.

PARLIAMENT VIEW SE1

TOTAL APPROX. FLOOR AREA 665 SQ.FT. (61.8 SQ.M.)

Floor plans are for identification and guideline purposes only, not to scale. Compliant with RICS code of measuring practice. Floor plan supplied by Chik Chak Limited